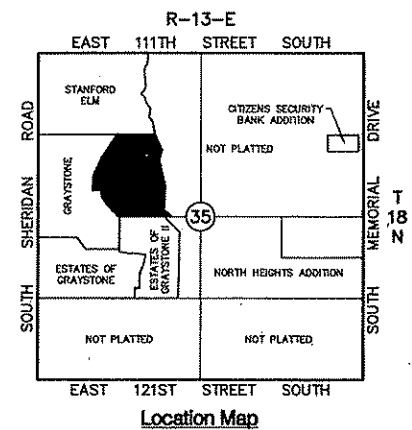


Devonshire at Graystone

A RESUBDIVISION OF
 BLOCK 3 OF 'GRAYSTONE'
 SECTION 35, T-18-N, R-13-E/
 CITY OF BIXBY, TULSA COUNTY, OKLAHOMA



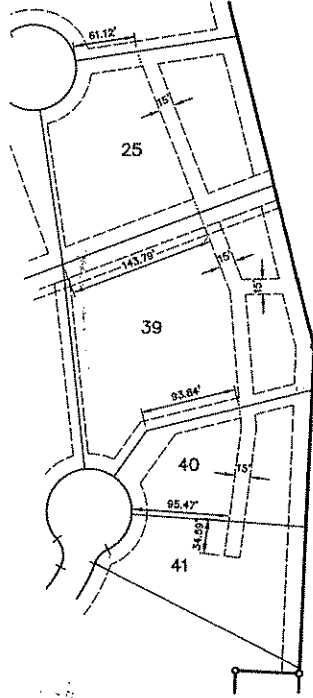
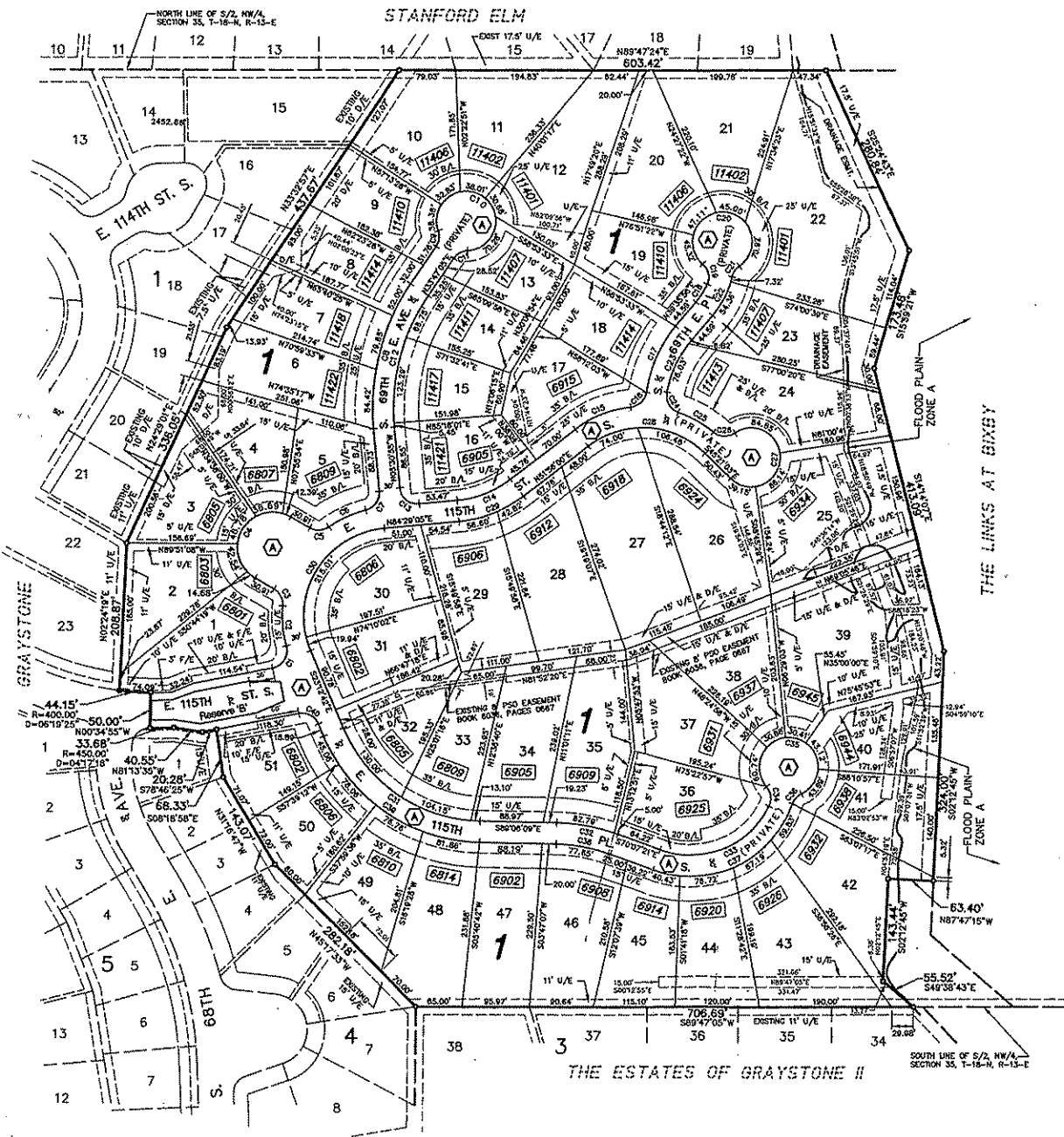
CERTIFICATE
 I hereby certify that all real estate taxes involved in this plat have been paid as reflected by the current tax rolls. Security as required has been provided in the amount of \$ 5,563.00 per tract receipt no. 980 to be applied to 2001 taxes.
 This certificate is NOT to be construed as payment of 2000 taxes in full but is given in order that this plat may be filed on record. 2000 taxes may exceed the amount of the security deposit.
 Dated 9/22/00
 Deputy



PLAT No.
5476
 FINAL PLAT
 CERTIFICATE OF APPROVAL
 I HEREBY CERTIFY THAT THIS PLAT WAS APPROVED BY THE CITY OF BIXBY:
 BY [Signature] Mayor - Vice Mayor
 THIS APPROVAL IS VOID IF THE ABOVE SIGNATURE IS NOT ENDORSED BY THE CITY MANAGER OR CITY CLERK.
 BY [Signature] City Manager - City Clerk

Curve Table

CURVE	LENGTH	RADIUS	DELTA
C1	41.37'	25.00'	94°48'27"
C2	57.28'	155.00'	21°10'23"
C3	28.53'	25.00'	65°22'32"
C4	187.08'	50.00'	180°00'00"
C5	28.53'	25.00'	65°22'32"
C6	57.28'	155.00'	21°10'23"
C7	35.39'	25.00'	81°04'33"
C8	218.06'	315.00'	39°18'00"
C9	23.28'	25.00'	63°20'37"
C10	210.15'	42.00'	288°41'14"
C11	23.28'	25.00'	63°20'37"
C12	195.49'	285.00'	38°18'00"
C13	59.27'	25.00'	90°00'00"
C14	82.30'	145.00'	32°33'05"
C15	84.00'	155.00'	31°02'58"
C16	32.27'	25.00'	75°57'57"
C17	104.08'	185.00'	30°34'57"
C18	29.79'	101.00'	18°45'01"
C19	31.21'	25.00'	71°32'09"
C20	208.35'	42.00'	284°14'28"
C21	18.55'	25.00'	42°44'33"
C22	61.88'	131.00'	38°47'18"
C23	82.85'	155.00'	38°46'18"
C24	35.82'	25.00'	82°06'13"
C25	56.84'	155.00'	21°00'34"
C26	32.49'	25.00'	74°28'23"
C27	190.14'	42.00'	259°23'19"
C28	180.46'	125.00'	82°42'57"
C29	99.42'	175.00'	32°33'05"
C30	234.85'	120.00'	107°41'47"
C31	247.25'	215.00'	62°53'27"
C32	87.79'	285.00'	18°58'49"
C33	182.16'	125.00'	83°29'48"
C34	29.49'	25.00'	67°34'42"
C35	208.83'	42.00'	285°01'31"
C36	19.09'	25.00'	44°12'35"
C37	244.18'	155.00'	90°15'35"
C38	77.85'	235.00'	18°58'49"
C39	281.75'	245.00'	63°53'27"
C40	34.04'	25.00'	78°02'53"



Easement Location Detail
 Lots 25, 39, 40 and 41

Owner
 GRAYSTONE DEVELOPMENT L.L.C.
 2217 EAST SKELLY DRIVE
 TULSA, OKLAHOMA 74105
 PHONE: (918) 743-1637

Engineer / Surveyor
 SACK AND ASSOCIATES, INC.
 SANTA FE DEPOT
 111 SOUTH ELGIN AVENUE
 TULSA, OKLAHOMA 74120-1816
 PHONE: (918) 592-4111
 C.A. No. 1783 (EXP. JUNE 30, 2001)

Subdivision Statistics
 SUBDIVISION CONTAINS 51 LOTS IN 1 BLOCK AND RESERVES 'A' AND 'B'
 BLOCK 1 CONTAINS 28.5737 ACRES
 RESERVE 'A' CONTAINS 2.4482 ACRES
 RESERVE 'B' CONTAINS 0.1680 ACRES

Legend
 B/L = BUILDING LINE
 D/E = DRAINAGE EASEMENT
 U/E = UTILITY EASEMENT
 F/E = FENCE EASEMENT
 6900 = STREET ADDRESS
 (A) = RESERVE 'A'

Basis of Bearings
 THE BEARINGS SHOWN HEREON ARE BASED ON THE RECORDED PLAT OF 'GRAYSTONE', PLAT NUMBER 520B.

Monumentation
 ALL CORNERS SHOWN HEREON WERE SET USING A 3/8" x 1/8" IRON PIN WITH A YELLOW CAP STAMPED 'SACK LS 1139'.

Addresses
 ADDRESSES SHOWN ON THIS PLAT ARE ACCURATE AT THE TIME THE PLAT IS FILED. ADDRESSES ARE SUBJECT TO CHANGE AND SHOULD NEVER BE RELIED ON IN PLACE OF THE LEGAL DESCRIPTION.

STATE OF OKLAHOMA } SS
 COUNTY OF TULSA }

I, Joan Hastings, Tulsa County Clerk, in and for the County and State above named, do hereby certify that the foregoing is a true and correct copy of a like instrument now on file in my office.

Dated the 20 day of 2000
 JOAN HASTINGS, Tulsa County Clerk

Deputy

